

THE ICONIC Connie AIRPLANE

TRANSFORMING
INTO A COCKTAIL
LOUNGE AT THE
TWA HOTEL
ON MAY 15, 2019




TWA
HOTEL

John F. Kennedy International Airport
New York City

JFK Airport & The Connie

Designed by world-renowned architect Eero Saarinen and opened in 1962, the TWA Flight Center was built for Trans World Airlines (TWA) by Howard Hughes to represent the era's excitement of travel. Constructed to fit the propliner Lockheed Constellation "Connie" airplane, the terminal was virtually obsolete on opening day: by then, jets dominated TWA's fleet.

The TWA Flight Center was designated a New York City landmark in 1994 and, after its 2001 closure, was listed on the National and New York State Registers of Historic Places in 2005. MCR/MORSE Development is restoring the treasured building and opening it to the public as the heart of the TWA Hotel.



Project Team

- Atlantic Models/Gogo Aviation
- Worldwide Aircraft Recovery, Ltd.
- Bay Crane

TWAhotel.com/connie

All About Connie

Feat of aviation

TWA's owner, Howard Hughes, commissioned the Lockheed Constellation planes in 1939.

Claims to fame

Hughes broke the trans-continental speed record on a Connie flight from

Birth of a beauty

The TWA Hotel's L-1649A Starliner (tail number: N8083H) was delivered to TWA in 1958 and featured a 150-foot wingspan, a 116-foot length (half an NYC block!) and a speed of 300 MPH. Only 44 L-1649As were made; a mere four remain today. She flew for TWA for two years before the Boeing 707 forced her into retirement in 1960.

Into the weeds

After serving as an Alaskan bush plane, she dropped drugs for traffickers and was later sold at auction.

Turning back time

In 2018, MCR/MORSE Development partnered



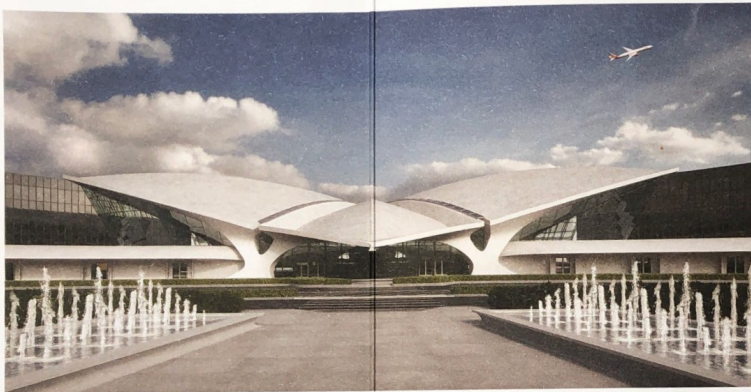
CONNIE BILLBOARD
IN TIMES SQUARE, 1955

with Atlantic Models/Gogo Aviation to restore Connie N8083H to her 1958 condition at Maine's Auburn-Lewiston Airport. Worldwide Aircraft Recovery, Ltd. disassembled the plane and trucked her to NYC, where she swung by the site of her old billboard.

New career

Connie N8083H will transform into a one-of-a-kind cocktail lounge located on the "tarmac" outside the TWA Hotel. Guests can enter the cockpit and flip the switches! The airplane will also be available to book for events. →





INSIDE THE TWA Hotel

JFK Airport's only on-airport hotel takes flight with restaurants, retail and midcentury modern-inspired guestrooms on May 15, 2019.



- 512 ultra-quiet guestrooms with views of JFK's runways and the former TWA terminal
- 6 restaurants, including the Paris Café by Jean-Georges
- 8 bars, including The Sunken Lounge operated by Gerber Group
- 50,000-square-foot event center that can host up to 1,600 people
- The world's biggest hotel gym; a 10,000-square-foot fitness center operated by The Wright Fit
- High-end retail outlets
- Intelligentsia coffeebar and coffee carts
- Museum exhibits curated by the New-York Historical Society focused on the Jet Age, midcentury modern design and TWA, with vintage TWA air hostess uniforms by Valentino, Ralph Lauren and Stan Herman on display
- Authentic Solari split-flap departures board with original mechanical operation manufactured in Udine, Italy
- Rooftop pool and 10,000-square-foot observation deck overlooking runway 4L/22R
- Entirely off-grid cogeneration plant
- Connected to JFK Terminal 5 via Eero Saarinen's iconic flight tubes made famous by the 2002 film *Catch Me If You Can*
- Accessible to all terminals via AirTrain
- LEED certified



BOOK ROOMS ONLY AT
TWAhotel.com